

AN Interior



Special Section

Surfaces & Textiles 46

- Studio J. Jih + Figure 12
- New Design Collaborations 18
- Fala Atelier Goes Big in Porto 64
- Jim Olson's Downtown Seattle Haven 80

**AN
INTERIOR
TOP 50**

Issue 22

AN INTERIOR

TOP 50

ARCHITECTS

& DESIGNERS



Now in its fifth iteration, *AN Interior's* Top 50 recognizes the best North American architecture and design companies working in interiors today. Each year, *AN's* editors assemble a lineup that attempts balance—from smaller, emerging practices to larger, established firms; from design centers in New York and Los Angeles to cities across the continent; from high-end projects to budget-conscious commissions. What matters is the attention and creativity these teams deliver, and what follows is fashioned from the images and words they use to describe themselves. These outfits demonstrate a commitment to both craft and materials, and their efforts result in spaces that combine richness with comfort. Above all, this diverse listing aims to recognize talent known and about-to-be-known: While these pages contain many familiar practices, about half are new to this list. We are watching their work—and you should, too.

New York; London; Accra, Ghana
Adjaye Associates



Adjaye Associates strives for an architecture that enriches daily life and meets the diverse needs of the communities it serves. Notions of place-making, identity, memory, and meaning are central to the office's design process.

→ adjaye.com



ARCHITECTURE RESEARCH OFFICE
 New York

Architecture Research Office (ARO) is a diverse collective united by a collaborative process, commitment to accountable action, and social and environmental responsibility. The office works with leaders and communities to design projects that reveal the hidden potential within architectural and urban constraints.

→ aro.net

BESTOR ARCHITECTURE
 Los Angeles

Founded in 1995, Bestor Architecture is recognized for the inventive integration of architecture, urbanism, infrastructure, and landscape at multiple scales. The office's varied, creative, and aesthetically progressive body of work expands the territory of architecture into atmospheric urbanism.

→ bestorarchitecture.com



BROOKS + SCARPA
 Hawthorne, California;
 Fort Lauderdale, Florida

Brooks + Scarpa is a collective of architects, designers, and creative thinkers dedicated to enhancing the human experience. The firm is a multidisciplinary practice that produces innovative, sustainable, and iconic buildings and urban environments.

→ brooksscarpa.com

Austin, Texas; San Antonio
Clayton Korte



The places that capture imagination are products of strong vision, responsiveness to context, intentional design, and a symphony of interdisciplinary contributions. Clayton Korte creates places that celebrate their environment and exist where architecture, interiors, authenticity, and craft meet.

→ claytonkorte.com

CHARLAP HYMAN & HERRERO
 New York; Los Angeles

Charlap Hyman & Herrero (CHH) takes an integrated approach to conceptualizing and executing spaces. Working in various typologies, CHH considers divergent art forms and aims to create spaces that become worlds unto themselves, as Gesamtkunstwerk is at the core of the firm's objective.

→ ch-herrero.com



CHEN + SUCHART STUDIO
 Scottsdale, Arizona

Chen + Suchart Studio works at scales ranging from small, well-crafted projects and single-family residences to larger-scale urban designs. The common thread between all projects undertaken in the studio is the transcendence of style.

→ chensuchartstudio.com

ASHE LEANDRO
 New York

Established in 2008, Ashe Leandro approaches each project—whether it is residential or commercial, furniture or product design—with a unique vision integral to the office's design philosophy, as it embraces “instinct, ingenuity, and humor over traditional design convention.”

→ asheleandro.com



ASSEMBLEDGE+
 Los Angeles

Founded and led by David Thompson, Assembledge+ pursues an architecture that is driven by a commitment to collaboration and craftsmanship, with the goal of creating enduring environments that are user-focused, innovative, and sustainable.

→ assembledge.com

BERNHEIMER ARCHITECTURE
 Brooklyn, New York

Bernheimer Architecture creates dignified spaces through contemplative research and considers the pragmatics of building. In the studio's sustainable and resilient architecture a thoughtful use of form, materials, and systems leads to designs that respond to context, program, and budget.

→ bernheimerarchitecture.com



Clockwise from top right: Dean Kaufman, Beth Collier, Alan Tansey, Dror Baldinger

Clockwise from top: Courtesy Bestor Architecture, Enrico Fiorese, Casey Dunn

COMMON WORKS ARCHITECTS

Oklahoma City

Common Works Architects is an architecture and design studio established by Asa Highsmith in 2015. Often faced with budget and craft limitations, the practice leverages simple, small moves to achieve greater effects.

→ commonworks.archi



DESIGN, BITCHES

Los Angeles

Founded in 2010 by Catherine Johnson and Rebecca Rudolph, Design, Bitches possesses a bold and irreverent vision that makes architecture significant in daily life. Their multidisciplinary firm draws inspiration from the duo's eclectic expertise in design, art, and pop culture.

→ designbitches.com

F ↓

FRIDA ESCOBEDO

Mexico City

Frida Escobedo established her studio in 2006. In 2018 she became the youngest architect to design the prestigious Serpentine Pavilion in London. Earlier this year, she was selected to realize the renovation of The Met's modern and contemporary galleries.

→ fridaescobedo.com

G ↓

Brooklyn, New York

GRT Architects



GRT's partners, Tal Schori and Rustom-Marc Mehta, met in third grade. Since founding GRT in 2014, they have established a trademark of work that marries confidently voiced aesthetics with technical excellence, often alongside or in dialogue with a historical fabric.

→ grtarchitects.com

H ↓



HASTINGS

Nashville, Tennessee

Founded in 1985, HASTINGS is deeply committed to design and community. It produces award-winning sustainable architecture that positively impacts clients and society at large. HASTINGS's services include architecture, interior design, planning, and sustainability consulting.

→ hastingsarchitecture.com

D ↓



DEBORAH BERKE PARTNERS

New York

For over 30 years, Deborah Burke Partners has designed true-to-place projects. Each member of the firm's design leadership possesses a deep and distinct area of expertise; together, the office creates projects with unprecedented programs and unexpected architectural expressions.

→ dberke.com

Frederick Tang Architecture

Brooklyn, New York



Frederick Tang Architecture is a ten-person studio that provides architecture and design services as well as custom offerings in branding, graphic, product, and experience design. The studio emphasizes experimentation, curiosity, and collaboration in its iterative design process.

→ fredericktang.com



HÖWELER + YOON

Boston

Höweler + Yoon is an architecture practice and creative studio that believes design is an instrument for imagining and implementing change. For 18 years, the firm has built a reputation for work that is formally and technologically innovative, socially engaged, and conceptually rigorous.

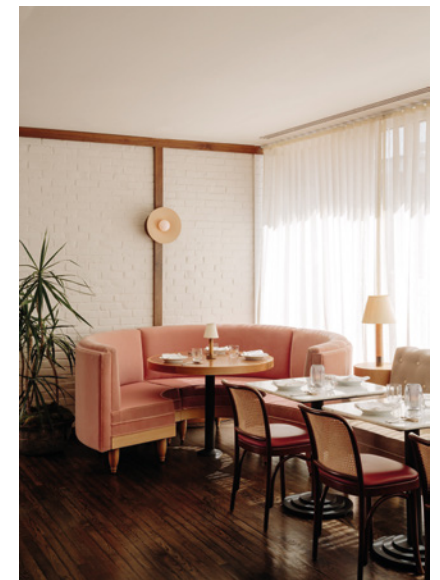
→ howeleryoon.com

HR DESIGN DEPT

Houston

Hughes Rowell Design Dept is an architecture studio founded in 2018 with the belief that architecture should be collaborative, responsive, and responsible. The office specializes in modern residential and commercial projects.

→ hrdesigndept.com



HOME STUDIOS

Brooklyn, New York

Former fiction editor Oliver Haslegrave founded Home Studios, a close-knit, collaborative team of 15 with accomplished backgrounds in architecture, interiors, custom fabrication and fine art to illuminate the stories of clients through a process that is intuitive, exacting, and attentive.

→ homestudios.nyc

Clockwise from top middle: Kaoru Inagawa, Gieves Anderson, Chris Cooper, Leonid Furmansky

Clockwise from top right: Nick McGinn, Bryan W. Ferry, Leonid Furmansky, Conor Doherty, Nicole Franzen

I ↓



IVY STUDIO
Montreal

Ivy Studio is an office of architecture that reimagines the boundaries of design. The firm's collaborative approach challenges industry standards to create unique spaces that propel brands further.

→ ivystudio.ca

K →

KATHERINE HOGAN ARCHITECTS
Raleigh, North Carolina

Katherine Hogan Architects is a woman-owned firm that has crafted a diverse body of work. The office is recognized for using ordinary materials in inventive ways and is committed to working on projects that make a difference in its community.

→ katherinehoganarchitects.com

Chicago
Kwong Von Glinow



Kwong Von Glinow is founded on the belief that architecture is meant to be enjoyed. Taking an optimistic and explorative approach, the office focuses on creating innovative living environments, places for cultural engagement, urban public space, and contemporary workspaces.

→ kwongvonglinow.com

L ↓

LANDRY SMITH ARCHITECT
Portland, Oregon

Landry Smith Architect is a conceptually driven office interested in the opportunities afforded by precise decisionmaking and the fundamentals of the architectural discipline to achieve maximum effect. This strategy aims to produce work that is at once essential and open-ended.

→ landrysmith.com



LECKIE STUDIO ARCHITECTURE + DESIGN
Vancouver

Leckie Studio Architecture + Design was founded in 2015 by principal architect Michael Leckie. The office engages in the practice of design across a range of scales and media and seeks to initiate cultural change through design.

→ leckiestudio.com



MICHAEL K CHEN ARCHITECTURE
New York

Michael K Chen Architecture (MKCA) provides innovative and superbly crafted work for clients seeking thoughtful and considered design. The office's approach is informed by curiosity and a love of tinkering, drawing, discourse, and making.

→ mkca.com

New York; Los Angeles
Leong Leong



Founded in 2009, Leong Leong is a minority-owned architecture firm and creative agency that uses the power of design to advance visionary social agendas within the built environment for institutions, cultural enterprises, and forward-thinking clients.

→ leong-leong.com

M ↓



MARLON BLACKWELL ARCHITECTS
Fayetteville, Arkansas

Since 1990, Marlon Blackwell Architects has designed award-winning, environmentally responsive projects. The office believes that architecture can happen anywhere, at any scale, at any budget—for anyone. It uses an economy of means to deliver maximum meaning.

→ marlonblackwell.com

MICHAEL HSU OFFICE OF ARCHITECTURE
Austin, Texas; Houston

Founded in 2005, Michael Hsu Office of Architecture believes that design is for everyone. The office designs with empathy and to elicit emotion. It believes in the active collaboration of designer, client, and artisan to create a sense of well-being.

→ hsuoffice.com

Clockwise from top left: Alex Lesage, James Florio, courtesy Landry Smith Architect, Todd Cole

Clockwise from top left: Ema Peter, Naho Kubota, Chase Daniel, Max Burkhalter

MURRAY LEGGE ARCHITECTS

Austin, Texas

The work of Murray Legge Architects reveals the extraordinary opportunities that exist in the ordinary. Employing a creative process that deeply considers practical issues of design, the office examines how materials, space, and light create places that resonate and engage.

→ murraylegge.com



O ↓

OJT

New Orleans

Led by Jonathan Tate, OJT is an architecture and urban design practice focused on thoughtful design. Its work varies in project type and scale. The office brings the same intensity of imagination and invention to everything it does.

→ officejt.com



OLSON KUNDIG

Seattle; New York

Olson Kundig is led by 14 principals/owners who are supported by a team of over 250. Every completed project manifests a “macro-to-micro” level of attention, from the big ideas to the smallest details.

→ olsonkundig.com

Rotterdam; Hong Kong; New York; Queensland, Australia; Doha, Qatar
OMA New York



OMA is an international practice operating within the traditional boundaries of architecture and urbanism. The office is led by eight partners: Rem Koolhaas, Reinier de Graaf, Ellen van Loon, Shohei Shigematsu, Iyad Alsaka, Chris van Duijn, Jason Long, and David Gianotten.

→ oma.com

N ↓

NORMAN KELLEY

Chicago

Founded in 2012 by Carrie Norman and Thomas Kelley, Norman Kelley works in the fields of residential architecture, commercial interiors, furniture design, exhibition design, and design criticism. Its process is collaborative, sensitive to place, and irreverent to tradition.

→ normankelley.us

Halifax, Nova Scotia; Toronto
Omar Gandhi Architect



Founded in 2010, Omar Gandhi Architect is an award-winning modern architecture studio.

→ omargandhi.com

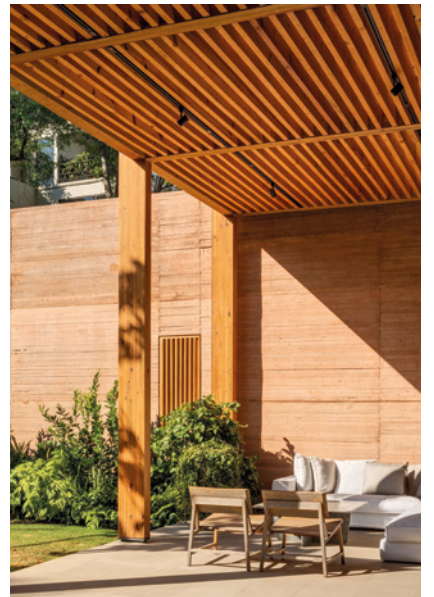


ONLY IF—

Brooklyn, New York

Only If— is a design practice for architecture and urbanism founded in 2013 by Adam Snow Frampton and Karolina Czekczek. The office focuses on fundamental questions and potentials with the ambition to create clarity and simplicity within often-complex circumstances and constraints.

→ only-if.com



P ↓

PENTAGON

Los Angeles

Pentagon was founded in 2014 by Ben Crawford, Tyler McMartin, Paul Stoelting, Dale Strong, and Paul Trussler.

→ pentagon.la



PART OFFICE

Los Angeles

Part Office is a design studio founded by Kristin Korven and Jeff Kaplon in 2015. The office works on projects of all scales, from singular objects to large developments (with many homes in between).

→ partoffice.com

PÉREZ PALACIOS ARQUITECTOS ASOCIADOS

Mexico City

Pérez Palacios Arquitectos Asociados (PPAA) is driven by an architecture of ideas over an architecture of forms. The office conceives of architecture as an open medium, one that is constantly tested. PPAA follows an inclination for nature to create sensorial atmospheres.

→ perezpalacios.mx

Clockwise from top right: Angella Hau, Jason O'Rear, Leonid Furmansky

Clockwise from top right: Anna Morgowicz, Rafael Gamo, Eric Staudenmaier, Adrian Ozimek

R ↓

RAVI HANDA ARCHITECT
Montreal

Ravi Handa is a licensed architect whose practice is dedicated to what physical space makes us feel. By optimizing space, quality of light, and energy consumption, he believes architecture can inspire serenity, highlighting our interconnectedness to our environment.

→ rha.works

S ↓

SPIEGEL AIHARA WORKSHOP
San Francisco

Spiegel Aihara Workshop (SAW) is a transdisciplinary design firm operating at the nexus of architecture, landscape, and urban design, allowing the company to work across scales and timelines at the onset of a project. SAW views design as a collaborative, research-based process.

→ sawinc.com



SHIN SHIN
Los Angeles; Detroit

Shin Shin Architecture is a female- and minority-owned architecture and design firm cofounded by sisters Melissa and Amanda Shin. The office provides a full-service architectural experience for residential, commercial, and cultural projects of all scales.

→ shinshinarch.com

U ↓



UNDECORATED
Detroit

Ishtiaq Jabir Rafiuddin started UNDECORATED in 2017. Previously, he cofounded the co-working space Based In and the visualization studio Mimaj and worked for REX and OMA. Born in Bangladesh, Rafiuddin has lived in Dhaka, New York, Buffalo, Istanbul, and Detroit.

→ undecorated.us

W ↓

Los Angeles
Woods + Dangan



Woods + Dangan creates modern homes through dialogue and exploration. The office collaborates with its clients throughout the design process and works with trusted trades persons to deliver work that is uncompromising in its craftsmanship.

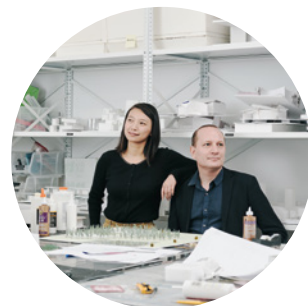
→ woodsangan.com

New York; Beijing
Steven Holl Architects



Steven Holl Architects (SHA) is a 28-person architecture and urban design office that works globally from two locations. SHA is recognized for its ability to shape space and light with great contextual sensitivity and to catalyze each project's unique qualities.

→ stevenholl.com



SO - IL
Brooklyn, New York

Diverse in origin, SO - IL's team of collaborators speaks a dozen languages and is informed by global narratives and perspectives. Working with ambitious clients, the office explores how the creation of environments and objects inspires lasting positive intellectual and societal engagement.

→ so-il.org



UTILE
Boston

Utile thrives on solving complex urban problems in intelligent, pragmatic ways. From theoretical issues that frame policy to the practical implementation of architectural commissions, the office uses a rigorous, research-based approach to find the best answers.

→ utiledesign.com

WORKAC
New York

WORKac creates architecture and strategic planning concepts at the intersection of the urban, the rural, and the natural. The office strives to develop intelligent and shared infrastructures and to achieve a more careful integration between architecture, landscape, and ecological systems.

→ work.ac



WORRELL YEUNG
Brooklyn, New York

Led by Max Worrell and Jejon Yeung, the practice synthesizes complex systems and needs into clear solutions. The office approaches conceptualization and construction with equal concern, making work that appears simple and unembellished but is rooted in rigorous, innovative design.

→ worrellyeung.com



Clockwise from top: Eric Staudenmaier, Vincent Trullo, Hertha Hernaus

Clockwise from top left: Courtesy Undecorated, Joe Fletcher, Daniel Seung Lee, Bruce Damonte, Chuck Choi